

TANITA

Fitness & Sport Product Guide

The global leader in health monitoring

www.tanita.eu



I AM FITTER

THANKS TO THE BEST TRAINING
AND THE BEST TECHNOLOGY

Contents

Click on the section you want to go to

The world's No.1 BIA brand	4	Sports performance	14
The benefits of Tanita BIA technology to your clients and your business	5	MC-980 MA PLUS	16
Why Tanita Bioelectrical Impedance Analysis technology is the best	6	MC-780 MA	18
Validation	7	MC-580	20
Levels of Accuracy	8	DC-430 MA	22
Levels of Personalisation	9	DC-360	24
Information Output	10	DC-240 MA	26
Body Composition Measurements	12	Accessories	28
		Grow your revenue	29
		Leasing possibilities	29
		Get in touch	30

The world's No.1 BIA brand

TANITA is a Japanese company that manufactures and distributes precision weighing and body composition equipment worldwide.

Our products are widely used within the scientific research, healthcare, fitness industries and more recently experiencing rapid growth within the slimming, pharmacy and occupational health markets.

Tanita is the only manufacturer producing precision weighing and body composition devices for both the professional/medical field and for home usage.





The benefits of Tanita BIA technology to your members and your business

Retaining and motivating members are some of the biggest challenges for any fitness facility. Tanita can help you achieve this with excellent return on investment opportunities.

Measure

Recruit new members with health checks and individual training plans based around the results.

Monitor

Improve member retention through regular monitoring and communication, which is shown to improve success rate.

Motivate

Complete member journey through motivating and actionable measurements such as metabolic age.



Why Tanita Bioelectrical Impedance Analysis technology is the best

Highest levels of precision and clinical accuracy.

The original prediction equations used in Tanita software were devised by world-renowned body composition expert Professor Steven Heymsfield and his research team at St Luke's Roosevelt Hospital, Columbia University, New York. Extensive independent research has proven that the accurate prediction of an individual's body composition can only be determined if a range of parameters are included in an algorithm, such as gender, age and height and weight.

Trusted by experts for clinical excellence.

Tanita BIA technology has been more extensively validated against alternative body composition techniques than any other company and the findings have been published in international medical journals. In addition, Tanita monitors have been used in hundreds of independent research studies worldwide. Tanita is regarded by the scientific community as the gold standard in BIA technology and the Tanita Medical Advisory Board ensures Tanita remains at the forefront of scientific advances.

Ground breaking advances in research.

Tanita continually invests in numerous research projects that focus on enhancing understanding of key health and fitness issues, including areas such as childhood obesity, optimising sports performance and sarcopenia in the elderly. Our

aim is to work with experts to develop tools and technologies to assist all healthcare and sports professionals in providing the best possible services and to help people enjoy healthier lives.

Repeatability of measurements through precision weighing.

Precise weight measurements are essential for calculating accurate body composition measurements. Tanita prides itself on manufacturing highly accurate weighing mechanisms in both its home use and professional models. All Tanita medically approved professional monitors have been awarded NAWI Certification as well MDD Class IIa, FDA and CE Approval ensuring the highest standards are met.

Sound quality through robust construction.

Tanita has grown through continuous product innovation and a commitment to maintaining the highest manufacturing quality standards. The company operates award-winning manufacturing facilities in Japan and China and all Tanita medical products meet strict international quality standards and are independently quality-controlled.



**WORLD No.1
BIA BRAND**

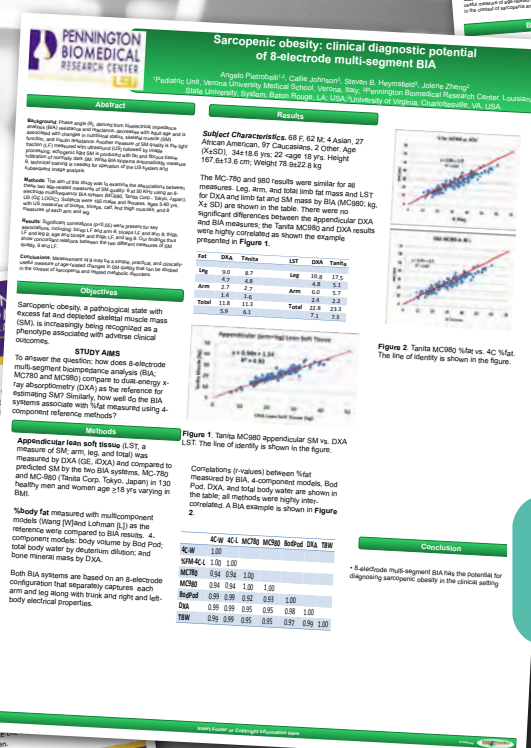
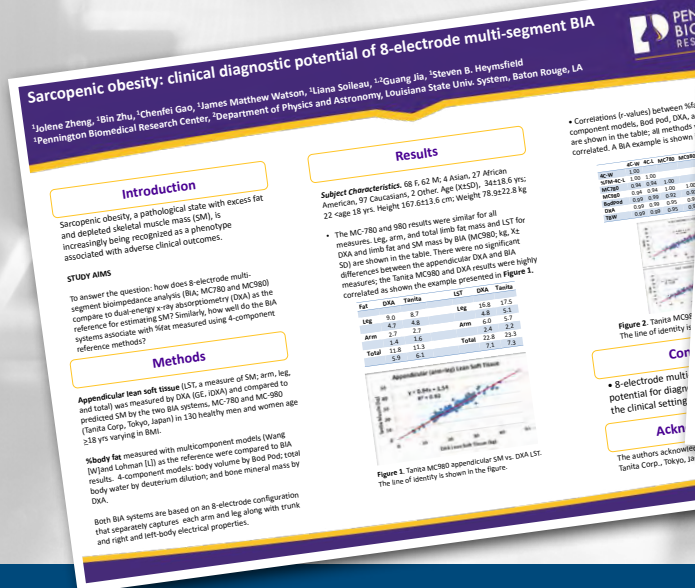


Validation

National and international regulatory standards continue to evolve and become more stringent. Medical devices are also becoming smaller and more complex in design, sometimes using advanced, engineered plastics. This makes the process of validation and verification even more important—not only to comply with regulations, but also design the highest-quality part and production process. The result is better repeatability, fewer mistakes, less rework and redesign, faster time to market, improved competitiveness, and lower costs.

Validation is the process of making sure that you have objective evidence that user needs and intended uses are met. It is usually done by tests, inspections, and in some cases analysis. However, the target of the validation is to make sure the user needs are met in a medical device that consistently provides the intended medical benefit in actual-use conditions. Verification is typically making sure that you have objective evidence that specified requirements are met. It is usually done by tests, inspections, and in some cases analysis as well.

Tanita's professional body composition monitors have been validated.



Validation papers are available on request.

Levels of Accuracy

How does BIA technology work?

Bioelectrical Impedance Analysis is a technique used for estimating body composition. All Tanita body composition monitors use advanced Bioelectrical Impedance Analysis technology. When you stand on a Tanita monitor, a very low, safe electrical signal is sent from four metal electrodes through your feet to your legs and abdomen to produce whole body composition measurements. In segmental models, the four hand-held electrodes will provide extra readings for each leg, arm and abdominal area.

The electrical signal passes quickly through water that is present in hydrated muscle tissue but meets resistance when it hits fat tissue. This resistance, known as impedance, is measured and input into scientifically validated Tanita equations to calculate body composition measurements in under 20 seconds.

Further detailed information on the benefits of BIA technology in the measurement of body fat can be found at www.tanita.eu

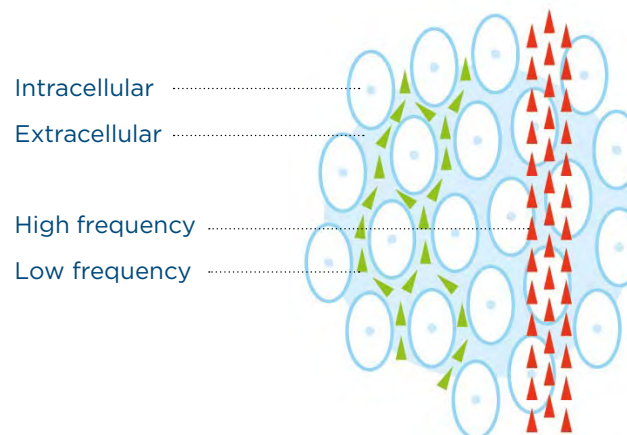


Multi frequency BIA technology

Tanita Multi-Frequency Monitors are able to measure bioelectrical impedance analysis at three or six different frequencies. The additional frequencies provide an exceptional level of accuracy compared to single and dual frequency monitors. The lower frequencies measure the impedance external to the cell membrane.

The higher frequencies are able to penetrate the cell membrane.

By measuring impedance at both the lower and higher frequencies it is possible to estimate extra-cellular water (ECW), intra-cellular water (ICW) and Total Body Water. This information is essential for providing the health status of a person and indicating health risks such as severe dehydration or oedema.



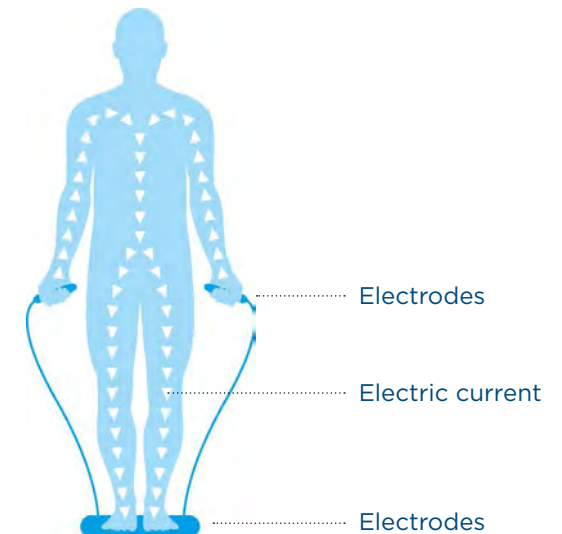
Dual frequency BIA technology

Tanita body composition monitors with Advanced Dual Bioelectrical Impedance Analysis Technology use two different frequencies to capture your body composition data. By using different frequencies, a higher accuracy of measurements can be achieved.



Single frequency BIA technology

Tanita body composition monitors with Single frequency Bio-electrical Impedance Analysis Technology use a single frequency to capture body composition data.



Levels of Personalisation



Segmental Personalisation

Segmental Body Composition Measurements is the highest level of personalised assessment available.

In addition to whole body measurements, the Tanita Segmental Monitor will assess impedance of each arm, leg and trunk area independently. This allows an additional layer of information about a person's health and fitness status including segmental fat mass and muscle mass.

This information can be used to identify specific anomalies in body composition such as oedema in the legs or assessing muscle mass in individual limbs to reduce the risk of injury. More importantly, segmental body composition analysis allows even the smallest changes in body composition to be identified and monitored over time giving a precise picture of overall health.



Whole Body Personalisation

Using dual or single frequency BIA, Tanita Body Composition Monitors can provide instant whole body measurements.

This includes body fat, fat mass, fat free mass, muscle mass, total body water, bone mass, BMR, metabolic age and visceral fat level. Further analysis of healthy ranges for these parameters are also available providing an excellent overview of a person's health and fitness status



Information Output



Giving **your business** the competitive edge

You help your clients achieve better results and greater success than they could alone – the Tanita pro app does the same for your business.

Your professional relationship with clients is built on support, understanding, dedication and a personalised approach. Tanita can help you add to that by giving your clients more; more data, more in-depth analysis, more knowledge of their own health and fitness.

By accessing their body composition data on the Tanita pro app, you have the facts at your fingertips; clear on-screen analysis helps you to show clients the progress they are making and the impact of their hard work. Then email them their results to keep them motivated between appointments.

What's more, it means you have the data for all your clients in one place, no matter where you are training, and group data analysis for those following a particular programme or diet will help you hone your approach and build on success.



**Flexible,
mobile and
easy to
use**

Available
with **Tanita
MC780 &
MC580**

Download
and use
**FREE for
up to 10
clients**

**Grow your
client base**
and access our
cost-effective
packages for up
to 200, 1000 and
unlimited client
lists

Compatible
with **iPad
& Android
tablets**





Tanita Pro Software Information Output

The Tanita PRO software package has been developed in partnership with the leading software developer Medizin & Service GmbH.

The Windows based software captures data from Tanita Body Composition Analysers and Activity Monitors, transfers it to a computer, and provides a client database with professional reports, graphs and trend analysis that can be used for client education, research and clinical records.

In line with EU regulations, the software is Medically Approved, which complies with MDD (Medical Device Directive) regulations. (Council Directive 93/42/EEC of 14 June 1993 concerning medical devices.)

In addition to body composition data captured from the Tanita Analyser, the user can input target values and waist circumference measurements allowing a full overview of a clients health and fitness progress. A full colour, printable, client consultation sheet showing segmental body composition analysis and ranges is available for MC-980 MA PLUS, MC-780 MA, DC-360, DC-430 MA and SC-240 MA



Body Composition Measurements



Weight



Body Fat Mass

The estimated weight of fat in your body



Body Fat Percentage

The amount of body fat as a proportion of your body weight



Total Body Water Percentage

The total amount of fluid in your body as percentage of your total weight



Muscle Mass

The predicted weight of muscle in your body including skeletal muscles, smooth muscles and the water contained within your muscles



Physique Rating

Assesses your physique according to the ratio of body fat and muscle mass in the body



BMR (Basal Metabolic Rate)

Number of calories your body needs at rest



Metabolic Age

Age level your body is rated at, according to your BMR



Bone Mass

The amount of bone (bone mineral level, calcium, other minerals) in your body



Visceral Fat Rating

Indicates level of fat surrounding your vital organs in the abdominal area



Body Mass Index

Indicates the relationship between your height and weight



Phase Angle

Phase angle is an indicator of cellular health and integrity.



Intracellular Water

ICW is the fluid found inside of cells. This should take up approximately two thirds of total body water.



Extracellular Water

ECW is the fluid found outside of cells. This should take up approximately one third of total body water.



Protein

The weight of protein in the body, protein is essential for the maintenance of muscle within the body

%Total Body Water

Female 45% to 60%
Male 50% to 65%
Athletic Body Types
 5% higher than adult range

Visceral Fat

Healthy level rating (1 - 12)
Excess level rating (13 - 59)

Healthy Body FatRange %

	Underfat	Healthy	Overfat	Obese
Female Age				
20 - 39	0% - 21%	21% - 33%	33% - 39%	39%+
40 - 59	0% - 23%	23% - 34%	34% - 40%	40%+
60 - 99	0% - 24%	24% - 36%	36% - 42%	42%+
Male Age				
20 - 39	0% - 8%	8% - 19%	19% - 25%	25%+
40 - 59	0% - 11%	11% - 21%	21% - 28%	28%+
60 - 99	0% - 13%	13% - 25%	25% - 30%	30%+

BMI

Healthy range
18.5 - 25

Phase Angle

Phase Angle is an estimation of cellular integrity (health) and can be used to monitor any changes to cell health over time.

Preferred Phase Angle

5° Female
 6° Male
 10° Adolescent
 12° Athletic

Bone Mass

Female Weight **Healthy BM weight**
 less than 50kg 1.95kg
 between 50kg - 75 kg 2.40kg
 over 76 kg 2.95kg

Male Weight **Healthy BM weight**
 Less than 65kg 2.65kg
 between 65kg - 95kg 3.29kg
 over 95kg 3.69kg

Physique Rating

Result **Physique Range** **Explanation**

1	Hidden Overfat	High body fat % with low muscle mass
2	Medium Frame Overfat	High body fat %, moderate muscle mass
3	Solidly Built	Large frame, high body fat % & muscle mass
4	Low Muscle	Average body fat % & low muscle mass
5	Standard	Average levels of body fat % & muscle mass
6	Muscular	Average body fat % & high muscle mass
7	Low Muscle & Underfat	Low body fat % & low muscle mass
8	Thin & Muscular (Athlete)	Low body fat % & adequate muscle mass
9	Very Muscular (Athlete)	Low body fat % & high muscle mass

Fat

Muscle

Fat Percentage: high, average, low

Muscle mass Index: low, average, high

Segmental Measurements

8-electrode segmental technology to show body composition measurements for each arm, leg and trunk area.

Segmental fat analysis

Segmental muscle analysis

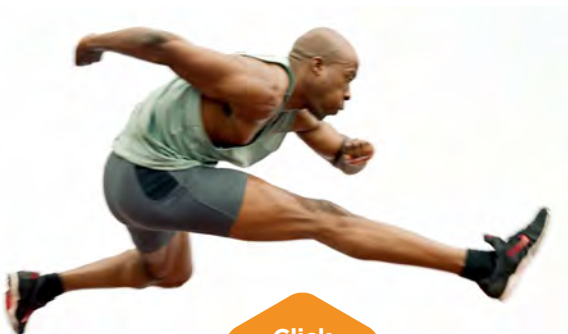
Sports performance

Tanita BIA technology is increasingly being used to assess elite athletes in order to achieve peak performance.

Body Composition Measurements

Body composition measurements can be used to supply personalised athlete information relevant to different specialist units within the sport performance teams including:

- Biomechanics
- Sports nutrition
- Sports science
- Physiotherapy
- Medical unit
- Fitness coach
- Strength and conditioning
- Rehab and pre-rehab



Click
here to
find out
more

Using The Data

This data can be used to optimise athlete assessments and treatments:

- Monitor optimal conditioning of athletes at peak times of the season
- Track long term changes in overall physique and body composition year-on-year
- Track youth development and physiological changes before, during and after training programmes or season
- Assist in injury prevention by monitoring muscle balance as part of the biomechanical assessment
- Assist in the rehabilitation post injury by assessing muscle development segmentally and comparing data against peak personal player data
- Monitor extracellular and intracellular hydration status to ensure optimal training and nutritional state, this is especially important during seasonal changes
- Profile new players as part of initial medical assessment
- Monitoring, tracking and sharing of data with third parties and potential buyers for player profiling



I AM FASTER

THANKS TO THE BEST TRAINING AND THE BEST TECHNOLOGY



MC-980 MA PLUS

Segmental Multi Frequency
Body Composition Analyser
with touchscreen display and
Windows® OS

The MC-980 MA PLUS is the ultimate tool in providing fast in-depth information for truly personalised medical, health and fitness consultations. Incorporating the latest multi-frequency BIA technology with the flexibility of in-built Microsoft® Windows® real time OS software, this monitor provides fast, convenient and accurate information. The MC-980 MA PLUS provides a full medical grade body composition analysis in less than 30 seconds and has an easy-to-follow colour interactive touch screen display.



MC-980 MA PLUS

LEVEL OF ACCURACY

- ACCURACY GRADE: NAWI Class III, MDD Class II-a.

LEVEL OF PERSONALISATION

- Full segmental body composition analysis provided in 30 seconds using clinically accurate Tanita Multi Frequency BIA Technology.
- Interactive, touch screen display allows clients to take measurement without specialist assistance.

INFORMATION OUTPUT

- Software and detailed consultation sheets available in 14 languages.
- In-built Microsoft® Windows® real time OS allows client data to be automatically stored, managed and output. Windows 8 upgrade.
- USB ports allow simple data input/output and accessories to be connected including printers, bar code scanners and data capture devices.
- Tanita PRO Software compatible, allowing trend analysis, health risk assessments and full data management.

OTHER FEATURES

- Max weight capacity 300kg with 100g accuracy
- **NEW** colour options; champagne gold and ruby red.
- **NEW**: Sarcopenia index included (for indepth assessment of elderly health)

Technical Specification

Accuracy Grade	MDD CLASS II-a, NAWI CLASS III
Approved Usage	MDD approved for medical use
Age Range	5 - 99 years
Weight Capacity	300 kg
Graduation	0.1kg
Product Dimensions	450 x 490 x 1240 mm
Product Weight	33 kg
Power Source	230V
Interface	3 x USB



MC-980 MA PLUS

MC 980 MA PLUS print out

Total Body Measurements

- Weight
- BMI
- Body Fat %
- Visceral Fat Indicator
- Fat Mass
- Fat Free Mass
- Muscle Mass
- Protein kg
- Total Body Water Kg
- Total Body Water %
- Extra-Cellular Water Kg
- Intra-Cellular Water Kg
- ECW/TBW Ratio
- Basal Metabolic Rate
- Basal Metabolic Rate Indicator
- Bone Mineral Mass Indicator
- Metabolic Age
- Physique Rating
- Sarcopenia Index *new*

Segmental Measurements

- Segmental Body Fat %
- Segmental Body Fat kg
- Segmental Fat Distribution Analysis
- Segment Fat Distribution Rating
- Segmental Muscle Mass Kg
- Segmental Muscle Mass Rating
- Segmental Muscle Mass Balance
- Leg Muscle Score
- Segmental Reactance/Resistance
- Segmental Phase Angle

Compatible Software

TANITA
PRO



5 YEAR
GUARANTEE



MC-780 MA

Multi frequency Segmental Body Composition Analyser with interactive display console and in-built SD card facility

The MC-780 MA has been designed to be an interactive stand-alone unit where clients can step on and take a measurement without specialist assistance. A full segmental body composition analysis is performed in less than 20 seconds.

The large LED dual display shows whole body composition measurement data and detailed segmental analysis in an easy-to-read illustrative format.



LEVEL OF ACCURACY

- ACCURACY GRADE: NAW: Class III, MDD: Class IIa.

LEVEL OF PERSONALISATION

- Full and fast segmental body composition analysis using clinically accurate multi frequency BIA technology.
- Certified for medical consultations.

INFORMATION OUTPUT

- In-built SD card facility allows data to be automatically collected and downloaded at convenience
- Client Identity feature allows continuous data to be collected for each client effortlessly. Also allows large anonymous data sets to be collated for research studies
- USB Connection
- Display console can be reversed for confidential readings
- Output to any Pictbridge printer for a detailed client consultation sheet allowing a full client assessment.

OTHER FEATURES

- Lightweight, easy to disassemble and transport
- Easy to use interactive display allows free standing use
- High weighing capacity 270kg
- Optional accessory; wireless Bluetooth compatible Parani

Technical Specification

Accuracy Grade	MDD CLASS II-a, NAWI CLASS III
Approved Usage	MDD approved for medical use
Age Range	5 - 99 years
Weight Capacity	270kg
Graduation	0.1kg
Product Dimensions	(P) 360 x 360 x 1165mm (S) 360 x 360 x 1165mm
Product Weight	(P) 22kg (S) 15.5kg
Power Source	AC 100 - 240V
Interface	RS232, USB, SD CARD



MC-780 MA print out



MC-780 MA P

Total Body Measurements

- Weight
- BMI
- Body Fat %
- Visceral Fat Indicator
- Fat Mass
- Fat Free Mass
- Muscle Mass
- Physique Rating
- Total Body Water Kg
- Total Body Water %
- Extra-Cellular Water Kg
- Intra-Cellular Water Kg
- ECW/TBW Ratio
- Phase Angle
- Basal Metabolic Rate
- Basal Metabolic Rate Indicator
- Metabolic Age
- Bone Mineral Mass Indicator

Segmental Measurements

- Segmental Body Fat %
- Segmental Fat Distribution Rating
- Segmental Muscle Mass Kg
- Segmental Muscle Mass Rating
- Segmental Muscle Mass Balance
- Segmental Reactance/Resistance
- Segmental Leg Muscle Score
- Segmental Phase Angle

Accessories

Bluetooth wireless connection Parani



Compatible Software/App

TANITA PRO



5 YEAR GUARANTEE



MC-580

Portable segmental body composition scale

This portable body composition monitor MC-580 is the perfect device for client consultations on the move.

As it is battery powered, it gives you the ability to use it wherever you want.

It provides instant analysis of a client's health and fitness status as well as monitoring their progress over time, which enables you to provide your client with personalised advice about their training and diet.



LEVEL OF ACCURACY

- ACCURACY GRADE: 100g accuracy
- Latest dual frequency 4C reactance technology

LEVEL OF PERSONALISATION

- Instant analysis health and fitness status as well as monitoring their progress over time

INFORMATION OUTPUT

- Battery & amp; Adapter
- Bluetooth integrated
- Tanita PRO app, suitable for IOS, Android
- Tanita Pro Windows software compatible via cable
- Max weight capacity 270kg
- Connection to thermal printer via cable (not included)

OTHER FEATURES

- 10 measurements (segmental)
- Compatible with carry case for perfect fit (not included)
- 100g accuracy

Technical Specification

Accuracy Grade	100g
Age Range	5 - 99 years
Weight Capacity	270kg
Graduation	0.1kg
Product Dimensions	(P) ?? x ?? x ??mm (S) ?? x ?? x ??mm
Product Weight	(P) ??kg (S) 7.5kg
Power Source	AC 100-240V
Interface	RS-232C



MC-580 S



Get ahead, get the Tanita pro app

Total Body Measurements

- Weight
- (BMI) Body Mass Index
- Body Fat Mass
- Visceral Fat Rating
- Total Body Water
- Muscle Mass (lean mass)
- BMR (Basal Metabolic Rate)
- Metabolic Age
- Physique Rating
- Bone Mineral Mass
- Segmental Body Composition
- Phase Angle

Segmental Measurements

- Segmental Body Fat %
- Segmental Fat Distribution Rating
- Segmental Muscle Mass Kg
- Segmental Muscle Mass Rating
- Segmental Muscle Mass Balance
- Segmental Reactance/Resistance
- Segmental Leg Muscle Score
- Segmental Phase Angle

Compatible Software/App

TANITA
PRO



3 YEAR
GUARANTEE



DC-430 MA

Dual Frequency Body Composition Monitor with Integrated Printer

Featuring Dual Frequency BIA technology, the DC-430 MA delivers full body composition analysis in 15 seconds. Results are instantly shown on the easy-to-read LCD screen and the integrated printer automatically prints the body composition measurements together with a top line analysis.

For large data collection and convenience, all data can be stored on the SD Card for future use. Combined with Tanita PRO Software, the DC-430 MA allows you to conduct client trend analysis, health risk assessments and full data management. In addition, the DC-430 MA has been accredited with the accuracy grade MDD Class II-a and NAWI Class III allowing use for medical consultations.



DC-430 MA S

DC-430 MA P

LEVEL OF ACCURACY

- ACCURACY GRADE: MDD Class II-a, NAWI Class III

LEVEL OF PERSONALISATION

- Full body composition analysis provided in 20 seconds using clinically accurate Tanita Dual Frequency BIA Technology
- Certified for medical consultations

INFORMATION OUTPUT

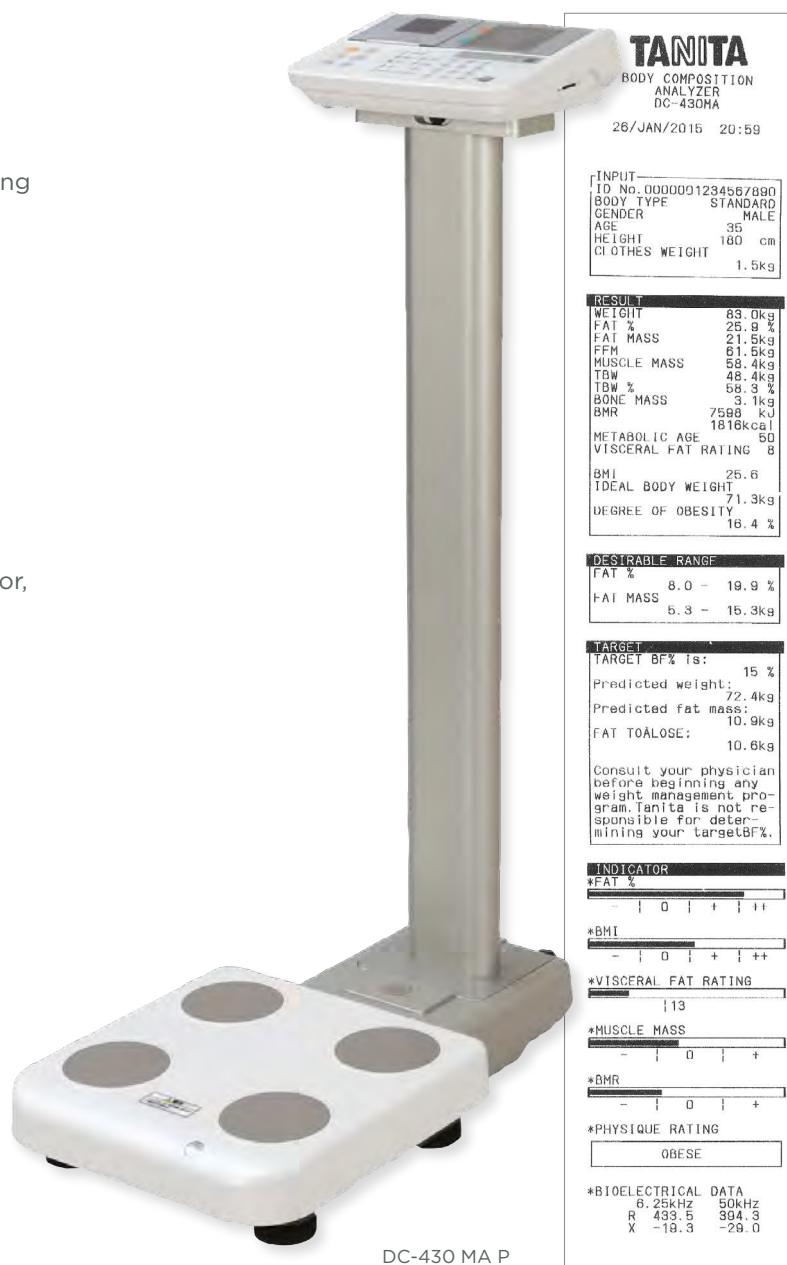
- Integrated printer prints instant read out of results with topline analysis.
- Results automatically stored on the SD Card, sent to a PC or printed.
- Tanita PRO Software compatible, allowing trend analysis, health risk assessments and full data management.
- Print Out Analysis: Body Fat Analysis, Muscle Mass Indicator, BMR Indicator, Physique Rating, Target: BF and Weight

OTHER FEATURES

- Max weight capacity 270kg with 100g accuracy

TECHNICAL SPECIFICATION

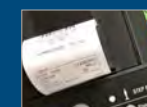
Accuracy Grade	MDD CLASS II-a, NAWI CLASS III
Age Range	5 - 99 years
Weight Capacity	270kg
Graduation	100g
Product Dimensions	(P) 360 x 360 x 1070 (S) 360 x 360 x 94
Product Weight	(P) 13.5kg (S) 7kg
Power Source	AC 100 - 240V
Interface	RS232, USB, SD CARD



Measurements

- Body fat %
- Fat mass kg,
- Fat free mass kg
- Muscle mass kg
- Total Body Water %
- Body mass index
- Bone mass kg
- Physique rating
- Visceral fat rating
- Basal Metabolic Rate kcal
- Basal Metabolic Rate indicator
- Metabolic Age
- Print Out Analysis:
 - Body Fat Analysis
 - Muscle Mass Indicator
 - BMR Indicator
 - Physique Rating
 - Target: BF and Weight

Accessories



TP 301
Paper Rolls



Bluetooth wireless
connection Parani

Compatible Software

TANITA
PRO



3 YEAR
GUARANTEE



DC-360

Dual Frequency Body Composition Monitor with Integrated Printer

Featuring Dual Frequency BIA technology, the DC-360 delivers full body composition analysis in 20 seconds. Results are instantly shown on the easy-to-read LCD screen and the integrated printer automatically prints the body composition measurements together with a top line analysis.

The robust, low profile platform provides additional client stability. For large data collection and convenience, all data can be stored on the SD Card for future use. Compatible with Tanita PRO Software, the DC-360 allows client trend analysis, health risk assessments and full data management.



DC-360

LEVEL OF ACCURACY

- Latest dual frequency 4C reactance technology

LEVEL OF PERSONALISATION

- Full body composition analysis provided in 20 seconds using clinically accurate Tanita Dual Frequency BIA Technology

INFORMATION OUTPUT

- Integrated printer provides instant read out of results with topline analysis.
- Results automatically stored on the SD Card, sent to a PC or printed.
- Tanita PRO Software compatible, allowing trend analysis, health risk assessments and full data management.

OTHER FEATURES

- Low profile platform for additional stability
- Max weight capacity 270kg with 100g accuracy

TECHNICAL SPECIFICATION

Age Range	5 - 99 years
Weight Capacity	270kg
Graduation	100g
Product Dimensions	(P) 360 x 360 x 1070 (S) 360 x 360 x 94
Product Weight	(P) 13.5kg (S) 7kg
Power Source	AC 100 - 240V
Interface	RS232, USB, SD CARD

TANITA	
BODY COMPOSITION ANALYZER DC-360	
26/JAN/2020 20:59	
INPUT	
ID No.	0000001234567890
BODY TYPE	STANDARD
GENDER	MALE
AGE	35
HEIGHT	180 cm
CLOTHES WEIGHT	1.5kg
RESULT	
WEIGHT	83.0kg
FAT %	25.8 %
FAT MASS	21.5kg
FFM	61.5kg
MUSCLE MASS	58.4kg
TBW	49.4kg
TBW %	59.3 %
BONE MASS	3.1kg
BMR	7599 kJ
METABOLIC AGE	1816kcal
VISCERAL FAT RATING	50
BMI	25.6
IDEAL BODY WEIGHT	71.3kg
DEGREE OF OBESITY	16.4 %
DESIRABLE RANGE	
FAT %	8.0 - 19.9 %
FAT MASS	5.3 - 15.3kg
TARGET	
TARGET BF% is:	15 %
Predicted weight:	72.4kg
Predicted fat mass:	10.9kg
FAT TO LOSE:	10.6kg
Consult your physician before beginning any weight management program. Tanita is not responsible for determining your target BF%.	
INDICATOR	
*FAT %	0 1 2 3 4 5 6 7 8 9 10 11 12 13 14 15 16 17 18 19 20 21 22 23 24 25 26 27 28 29 30 31 32 33 34 35 36 37 38 39 40 41 42 43 44 45 46 47 48 49 50 51 52 53 54 55 56 57 58 59 60 61 62 63 64 65 66 67 68 69 70 71 72 73 74 75 76 77 78 79 80 81 82 83 84 85 86 87 88 89 90 91 92 93 94 95 96 97 98 99 100
*BMI	0 1 2 3 4 5 6 7 8 9 10 11 12 13 14 15 16 17 18 19 20 21 22 23 24 25 26 27 28 29 30 31 32 33 34 35 36 37 38 39 40 41 42 43 44 45 46 47 48 49 50 51 52 53 54 55 56 57 58 59 60 61 62 63 64 65 66 67 68 69 70 71 72 73 74 75 76 77 78 79 80 81 82 83 84 85 86 87 88 89 90 91 92 93 94 95 96 97 98 99 100
*VISCERAL FAT RATING	0 1 2 3 4 5 6 7 8 9 10 11 12 13 14 15 16 17 18 19 20 21 22 23 24 25 26 27 28 29 30 31 32 33 34 35 36 37 38 39 40 41 42 43 44 45 46 47 48 49 50 51 52 53 54 55 56 57 58 59 60 61 62 63 64 65 66 67 68 69 70 71 72 73 74 75 76 77 78 79 80 81 82 83 84 85 86 87 88 89 90 91 92 93 94 95 96 97 98 99 100
*MUSCLE MASS	0 1 2 3 4 5 6 7 8 9 10 11 12 13 14 15 16 17 18 19 20 21 22 23 24 25 26 27 28 29 30 31 32 33 34 35 36 37 38 39 40 41 42 43 44 45 46 47 48 49 50 51 52 53 54 55 56 57 58 59 60 61 62 63 64 65 66 67 68 69 70 71 72 73 74 75 76 77 78 79 80 81 82 83 84 85 86 87 88 89 90 91 92 93 94 95 96 97 98 99 100
*BMR	0 1 2 3 4 5 6 7 8 9 10 11 12 13 14 15 16 17 18 19 20 21 22 23 24 25 26 27 28 29 30 31 32 33 34 35 36 37 38 39 40 41 42 43 44 45 46 47 48 49 50 51 52 53 54 55 56 57 58 59 60 61 62 63 64 65 66 67 68 69 70 71 72 73 74 75 76 77 78 79 80 81 82 83 84 85 86 87 88 89 90 91 92 93 94 95 96 97 98 99 100
*PHYSIQUE RATING	0 1 2 3 4 5 6 7 8 9 10 11 12 13 14 15 16 17 18 19 20 21 22 23 24 25 26 27 28 29 30 31 32 33 34 35 36 37 38 39 40 41 42 43 44 45 46 47 48 49 50 51 52 53 54 55 56 57 58 59 60 61 62 63 64 65 66 67 68 69 70 71 72 73 74 75 76 77 78 79 80 81 82 83 84 85 86 87 88 89 90 91 92 93 94 95 96 97 98 99 100
*BIOELECTRICAL DATA	
R	433.5
X	-18.3
50kHz	394.3
20.0	-20.0

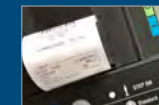


DC-360 S

Measurements

- Body fat %
- Fat mass kg,
- Fat free mass kg
- Muscle mass kg
- Total Body Water %
- Body mass index
- Bone mass kg
- Physique rating
- Visceral fat rating
- Basal Metabolic Rate kcal
- Basal Metabolic Rate indicator
- Metabolic Age
- Print Out Analysis:
 - Body Fat Analysis
 - Muscle Mass Indicator
 - BMR Indicator
 - Physique Rating
 - Target: BF and Weight

Accessories



TP 301
Paper Rolls



Bluetooth wireless
connection Parani

Compatible Software

TANITA
PRO



3 YEAR
GUARANTEE



DC-240 MA

Dual Frequency Medically approved Body Composition Scale

The DC-240 MA is a unique medically approved body composition monitor incorporating the latest Tanita BIA technology to provide highly accurate and repeatable measurements including body fat and body water.

The scale will also display weight and BMI readings on the oversized, easy to read display making it ideal for high frequency use. Weighing just 4.7kg, the Device is highly portable and ideal for field research.

An inbuilt USB port allows simple data transfer to data capture software allowing less time consuming paperwork and increased accuracy.



NEW
Dual Frequency
Available Q1 2021

DC-240 MA

LEVEL OF ACCURACY

- ACCURACY GRADE: MDD Class II-a, NAWI Class III

LEVEL OF PERSONALISATION

- Full body composition analysis provided in 15 seconds using clinically accurate Tanita BIA Technology
- Certified for medical consultations

INFORMATION OUTPUT

- Core body composition results shown on screen. All additional results can be accessed via Tanita PRO Software allowing trend analysis, health risk assessments and full data management.

OTHER FEATURES

- Lightweight and highly portable (4.7kg) perfect for field studies, mobile and community assessments
- Low profile platform for additional stability
- Dual-frequency 4 electrode
- High weight capacity 200kg
- Calibrated up to 300,000 uses with automatic calibration after each measurement

TECHNICAL SPECIFICATION

Accuracy Grade	MDD CLASS II-a, NAWI CLASS III
Age Range	5 - 99 years
Weight Capacity	200kg
Graduation	100g
Product Dimensions	340 x 440 x 65 mm
Product Weight	4.7kg
Power Source	9 V Adaptor or 6 x AA Batteries
Interface	USB



DC-240 MA

Measurements

- Weight
- Body fat %
- Body water %
- BMI

Measurements only available via software

- Body Fat %
- BMI
- Fat Mass
- Fat Free Mass
- Body Water %
- Body Water Mass
- Muscle Mass
- Bone Mineral Mass
- Visceral Fat Level
- Basal Metabolic Rate
- Metabolic Age

Compatible Software

TANITA
PRO



3 YEAR
GUARANTEE

Accessories



C-360

- Compatible with DC-360 portable
- Padded trolley bag with wheels and pull up handle
- Dimensions (inc wheels): H:69 x L:43.5 x W:20 cm



C-430

- Compatible with Tanita DC-430
- Padded trolley bag with wheels and pull up handle
- Dimensions (inc wheels): H:54 x L:39 x W: 19.5 cm



C-780

- Compatible with MC-780 MA portable
- Padded trolley bag with wheels and pull up handle
- Padded interior for safe storage and handy internal pockets
- Dimensions (incl wheels): H:69 x L:43.5 x W:27 cm



C-300 CH

- Compatible with Multiple Tanita products
- Padded trolley bag with wheels and pull up handle
- Suitable for BC420SMA, SC240, SC330S and WB-380
- Total Handle Length - 830 mm.
- Dimensions (inc wheels): 470 x 410 x 245 mm



Bluetooth Adapter

- Bluetooth adapter to wirelessly connect Tanita Professional devices

Grow your revenue

Monthly
member
health
checks

'Walk in'
health
checks for
non-members

New
member
sign ups

Example ROI using MC-780 MA

RRP £4,950 ex VAT

Health checks at **£5 per member**

1 per month - 50 members = **£250 per month**

'Walk in' Health Checks for non-members

£20 x 10 per month = **£200 per month**

£450 per month = £5,400 per year

Return on
investment
in less than
1 year!

If 10% of 'walk ins' become members =
an extra £5,040 per year (based on £35
monthly membership fee).

Increased Retention through improved
member services and satisfaction.



Leasing possibilities

Tanita now offers favourable leasing contracts for professional equipment. We offer 3 or 5 year leasing contracts with a possible "buying" option.

All we need to be able to help you to expand your business is:

- Company name and country
- Your name, email and title
- Chamber of Commerce number
- Your (business) phone number

For more information please contact:

Tanita Europe BV UK office
111 Piccadilly
Manchester
M1 2HY

0161 638 0926
info@tanita.eu

www.tanita.eu